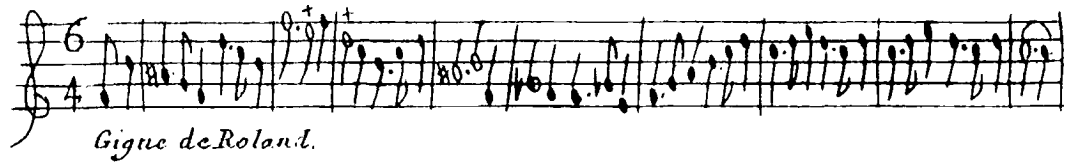
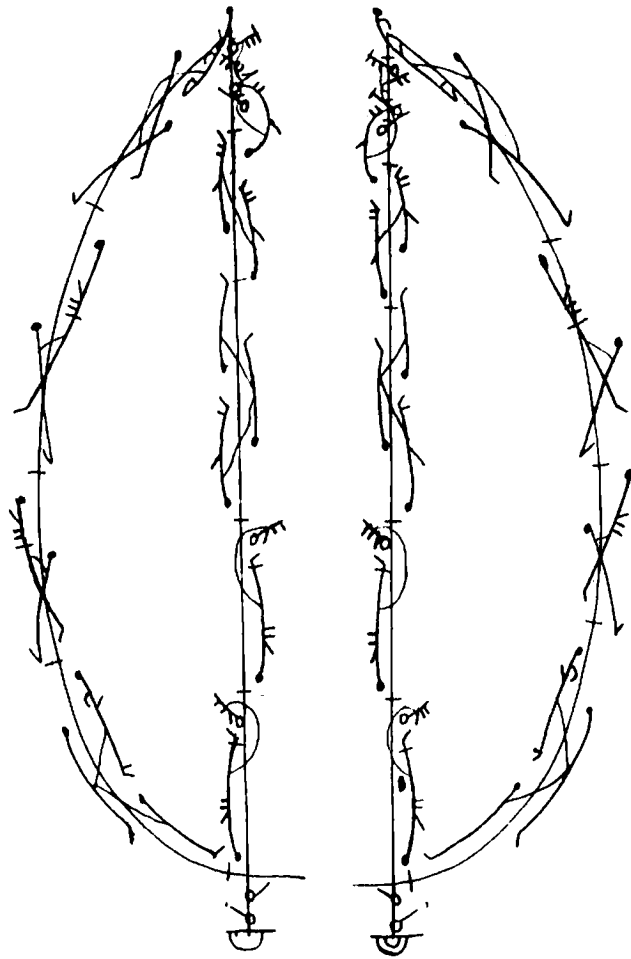


Gigue à deux.



Musical notation for a piece titled "Gigue de Roland." It consists of two staves. The upper staff is in 6/8 time and the lower staff is in 4/4 time. The music is written in a single system with a treble clef on the left. The notation includes various note values, rests, and dynamic markings such as *pp* and *ppp*. The piece concludes with a double bar line and repeat dots.

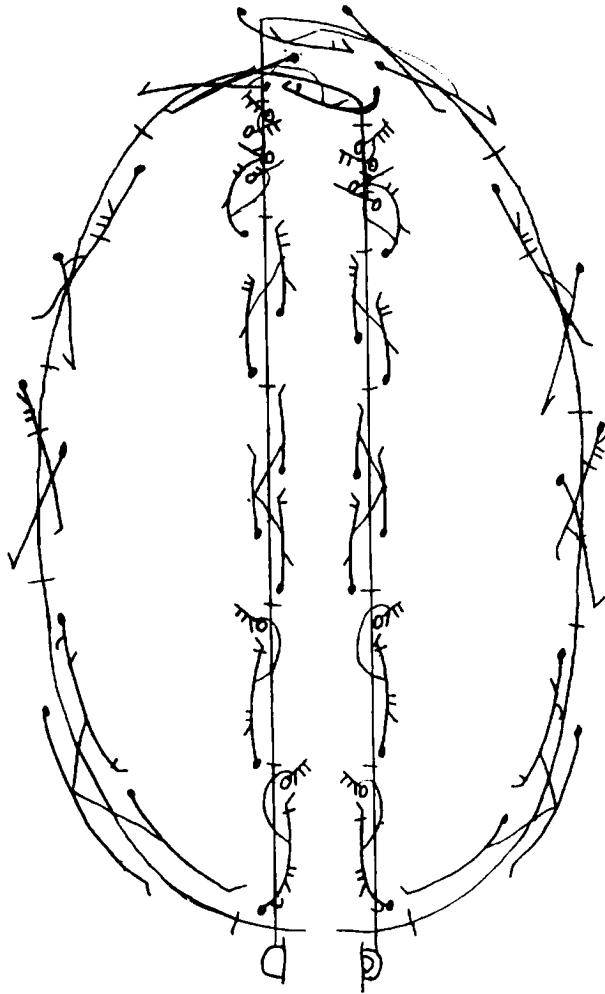
Gigue a deux



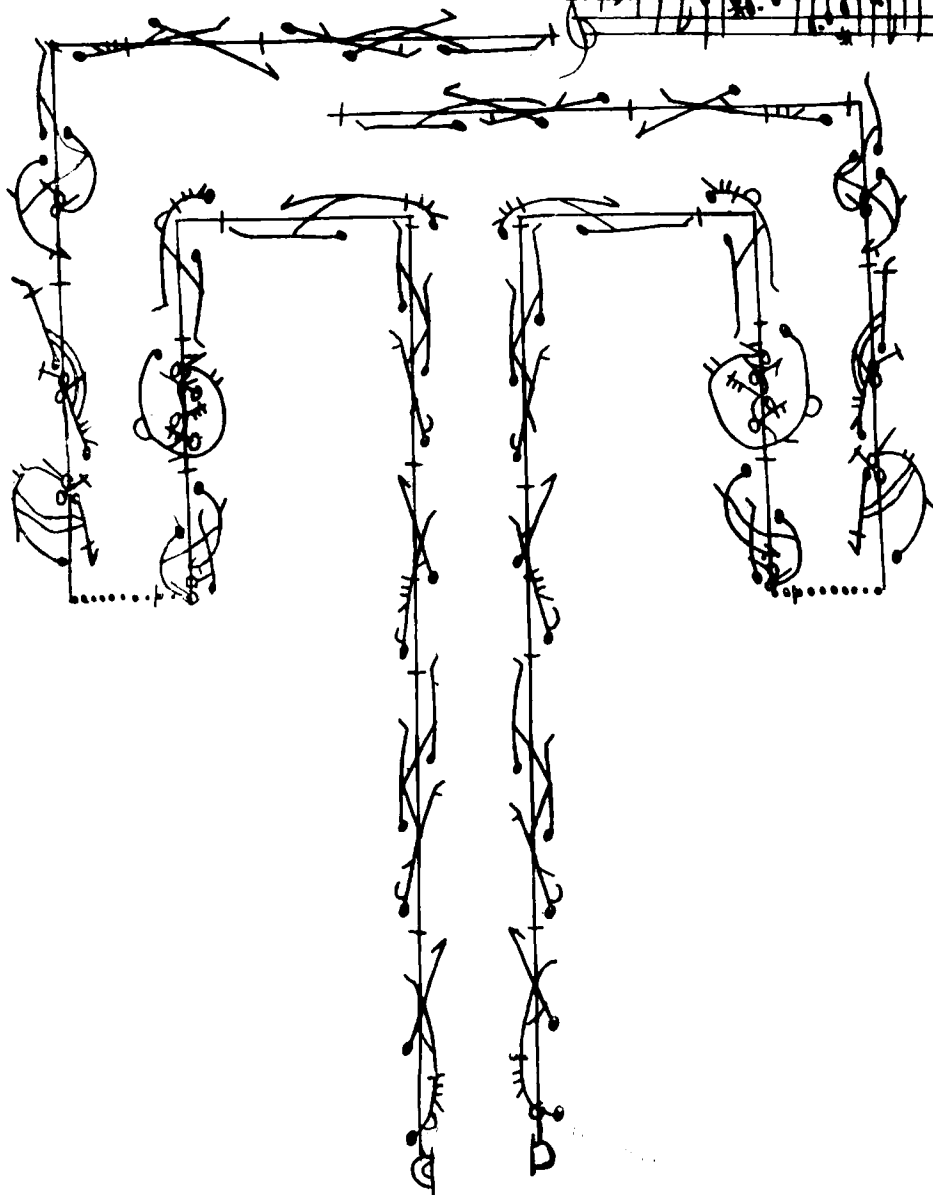
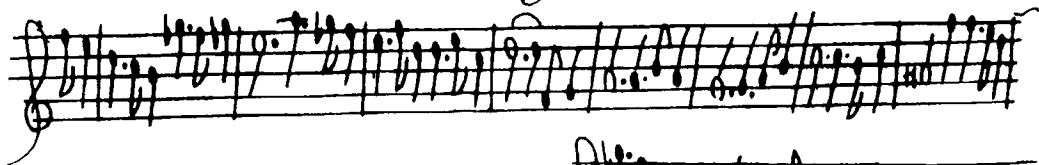
Handwritten musical notation for a piece titled "Gigue a deux." It features two staves, each with a treble clef. The notation is highly decorative and includes many slurs, ties, and intricate line work, suggesting a complex and possibly improvisatory or virtuosic piece. The notation is written in a cursive, handwritten style.

*à deux*

9



Gigue



*à deux*

12

