

Sarabande.

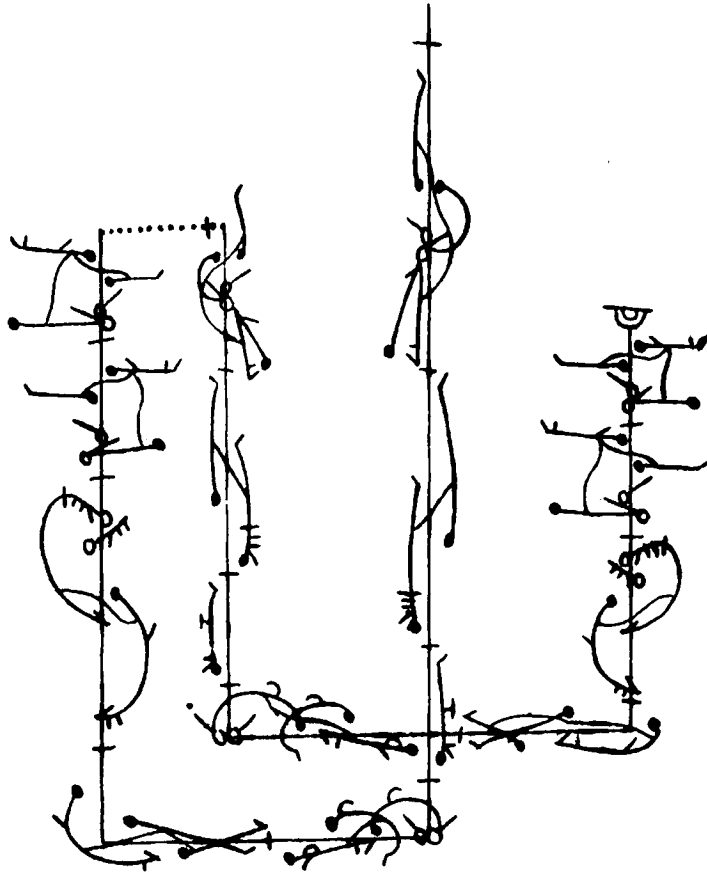
The first staff of handwritten musical notation, featuring a treble clef and a 3/4 time signature. The melody consists of a series of eighth and sixteenth notes, with some rests and a final cadence.

The second staff of handwritten musical notation, continuing the melody from the first staff. It includes a treble clef and a 3/4 time signature, with notes and rests.

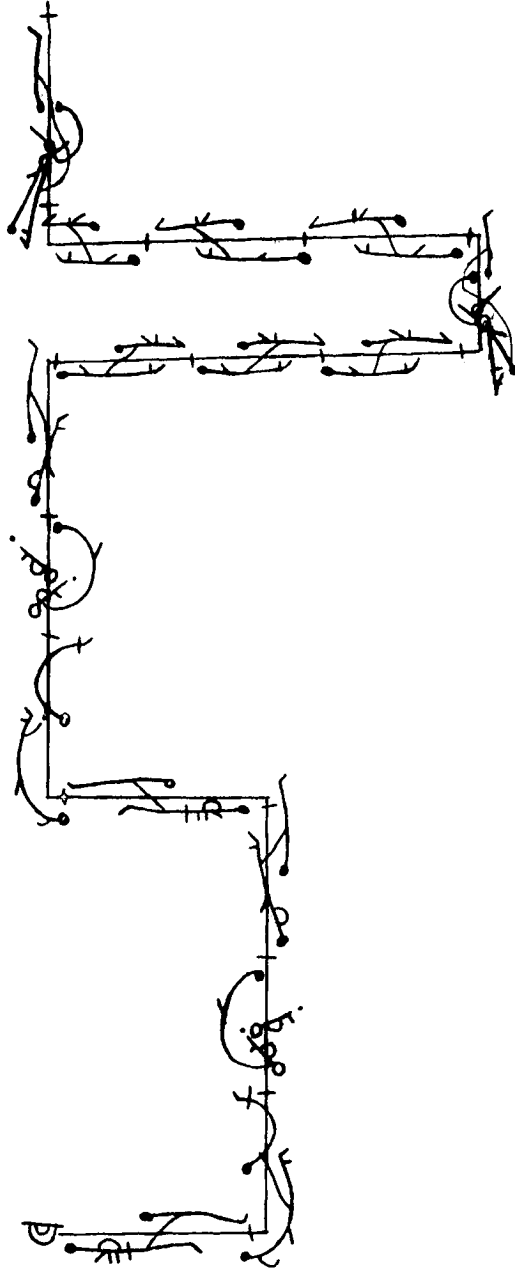
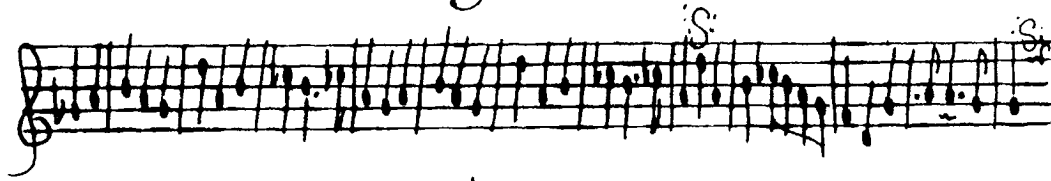
*Sarabande
pour femme.*

The musical notation for the 'Sarabande pour femme' section. It begins with a treble clef and a 3/4 time signature. The notation is written on a large vertical staff that descends from the top of the page. The melody is composed of various note values, including eighth and sixteenth notes, with some rests and a final cadence at the bottom.

Sarabande



pour femme



24

Sarabande.

